



PREPARED BY:  
**Engineering Associates, LLC**  
1220 OLD ALPHARETTA ROAD  
ALPHARETTA, GA 30005


JOB No. SYLVGA0003

MATERIAL LIST	QUANTITY	
	ESTIMATED	ACTUAL
864 FOC		
CO432(E)	1390'	
CO72(E)	211'	
HDPE	20'	
MST 4	1	
U-GUARD	2	
FDH 432	1	
HACO(432)	1	
HUO(432)	1	
H01	396	
BK2(5/8)(8)	1	


CITY OF SYLVESTER  
WORTH COUNTY, GEORGIA

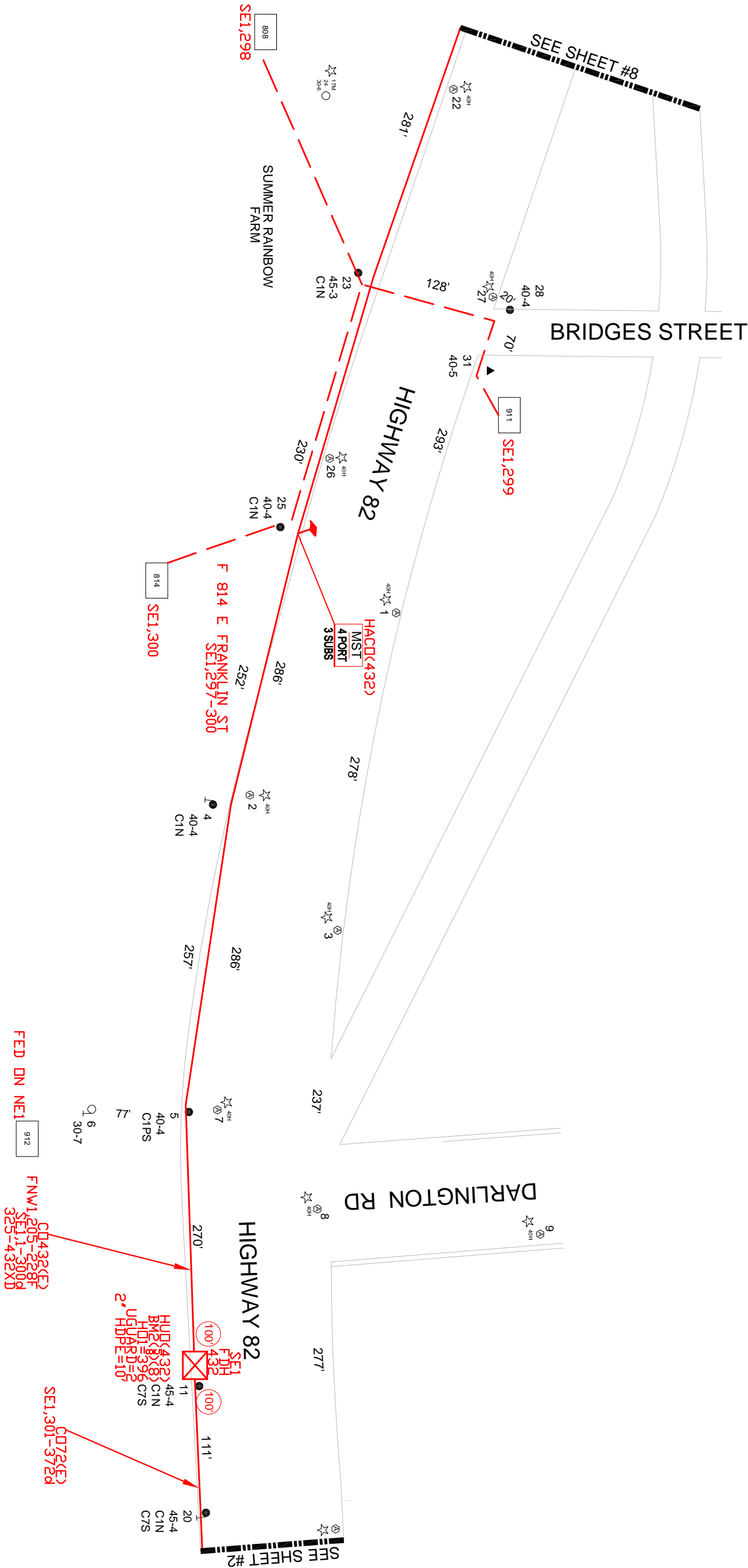
EXCEPT AS MAY BE OTHERWISE PROVIDED BY CONTRACT, THESE DRAWINGS AND SPECIFICATIONS SHALL REMAIN THE PROPERTY OF ENGINEERING ASSOCIATES, LLC. BEING ISSUED IN STICED, COPIED, OR USED FOR ANY PURPOSE WITHOUT SPECIFIC WRITTEN PERMISSION.

REVISIONS		
DATE	DESCRIPTION	INITIAL



Know what's below.  
Call before you dig.

SCALE		
B SIZE DWG:	1" = 100'	
SHEET 1	OF	16
DWG. NO.	Sylvester SE_1	
THIS IS A CADD DRAWING, DO NOT REVISE MANUALLY.		







PREPARED BY:  
**Engineering Associates, LLC**  
1220 OLD ALPHARETTA ROAD  
ALPHARETTA, GA 30005


JOB No. SYLVGA0003

MATERIAL LIST	QUANTITY	
	ESTIMATED	ACTUAL
CO48(6.6M)	249'	
CO72(6.6M)	966'	
HACO(72)	2	
H01	48	
12M ANCHOR	2	
10M GUY	2	
MST 4	1	


CITY OF SYLVESTER  
WORTH COUNTY, GEORGIA

EXCEPT AS MAY BE OTHERWISE PROVIDED BY CONTRACT, THESE DRAWINGS AND SPECIFICATIONS SHALL REMAIN THE PROPERTY OF ENGINEERING ASSOCIATES, LLC. BEING ISSUED IN STRICT CONFIDENCE AND NOT TO BE REPRODUCED, COPIED, OR USED FOR ANY PURPOSE WITHOUT SPECIFIC WRITTEN PERMISSION.

REVISIONS		
DATE	DESCRIPTION	INITIAL



Know what's below.  
Call before you dig.

SCALE	
B SIZE DWG:	1" = 100'
SHEET 3	OF 16
DWG. NO.	Sylvester SE_1

THIS IS A CADD DRAWING, DO NOT REVISE MANUALLY.

[illegible][illegible][illegible][illegible][illegible][illegible][illegible][illegible][illegible][illegible][illegible]

**Know what's below.  
Call before you dig.**









**Engineering  
Associates, LLC**

ALPHARETTA, GA 30005

ALPHARETTA, GA 30005

JOB No. SYLVGA00003

MATERIAL LIST	QUANTITY	
	ESTIMATED 2075 <sup>1</sup>	ACTUAL
CO432(E)	2	
MST 4	3	
HACO(432)	24	
HO1	2	
10M GUY		

EXCEPT AS MAY BE OTHERWISE PROVIDED BY CONTRACT, THESE DRAWINGS AND SPECIFICATIONS SHALL REMAIN THE PROPERTY OF ENGINEERING ASSOCIATES, LLC., BEING ISSUED IN STRICT CONFIDENCE AND SHALL NOT BE REPRODUCED, COPIED, OR USED FOR ANY PURPOSE WITHOUT SPECIFIC WRITTEN PERMISSION.

[illegible]

B SIZE DWG: 1" = 100'

SHEET 8 OF 16

Sylvester SE\_1

Know what's **below**.  
**Call before you dig**





PREPARED BY

**Engineering  
Associates, LLC**

1220 OLD ALPHARETTA ROAD  
ALPHARETTA, GA 30005

JOB No. SYLVGA00003

MATERIAL LIST	QUANTITY	
	ESTIMATED	ACTUAL
CO432(E)	964	
CO288(E)	275	
MST 8	1	
MST 12	3	
HACO(432)	3	
H01	240	
12W ANCHOR	2	
10M GUY	2	

[illegible]

**CITY OF SYLVESTER**  
**WORTH COUNTY, GEORGIA**

EXCEPTS MAY BE OTHERWISE PROVIDED BY CONTRACT. THESE DRAWINGS AND SPECIFICATIONS SHALL REMAIN THE PROPERTY OF ENGINEERING ASSOCIATES, LLC., BEING ISSUED IN STRICT CONFIDENCE AND SHALL NOT BE REPRODUCED, COPIED, OR USED FOR ANY PURPOSE WITHOUT SPECIFIC WRITTEN PERMISSION.

[illegible]

SCALE

B SIZE DWG: 1" = 100'

SHEET 9 OF 16

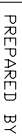
**DW/G. NO**

Sylvester SE\_1

Know what's below.  
**Call before you dig**

[illegible][illegible][illegible][illegible][illegible][illegible][illegible][illegible][illegible][illegible][illegible][illegible][illegible][illegible][illegible]

Know what's **below**.  
Call before you dig.



**Associates, LLC**  
1220 OLD ALPHARETTA ROAD

ALPHARETTA, GA 30005

ALPHARETTA, GA 30005

MATERIAL LIST		QUANTITY	
		ESTIMATED	ACTUAL
CO288(6.6M)		618'	
CO24(6.6M)		1044'	
CO288(E)		241'	
CO24(E)		538'	
WST 8		4	
WST 12		2	
HACO(288)		3	
HACO(24)		3	
H01		36	
12M ANCHOR		5	
10M GUY		5	

[illegible]

**CITY OF SYLVESTER**  
**WORTH COUNTY, GEORGIA**

EXCEPT AS MAY BE OTHERWISE PROVIDED BY CONTRACT, THESE DRAWINGS AND SPECIFICATIONS SHALL REMAIN THE PROPERTY OF ENGINEERING ASSOCIATES, LLC., BEING ISSUED IN STRICT CONFIDENCE AND SHALL NOT BE REPRODUCED, COPIED, OR USED FOR ANY PURPOSE WITHOUT SPECIFIC WRITTEN PERMISSION.

[illegible]

SCALE

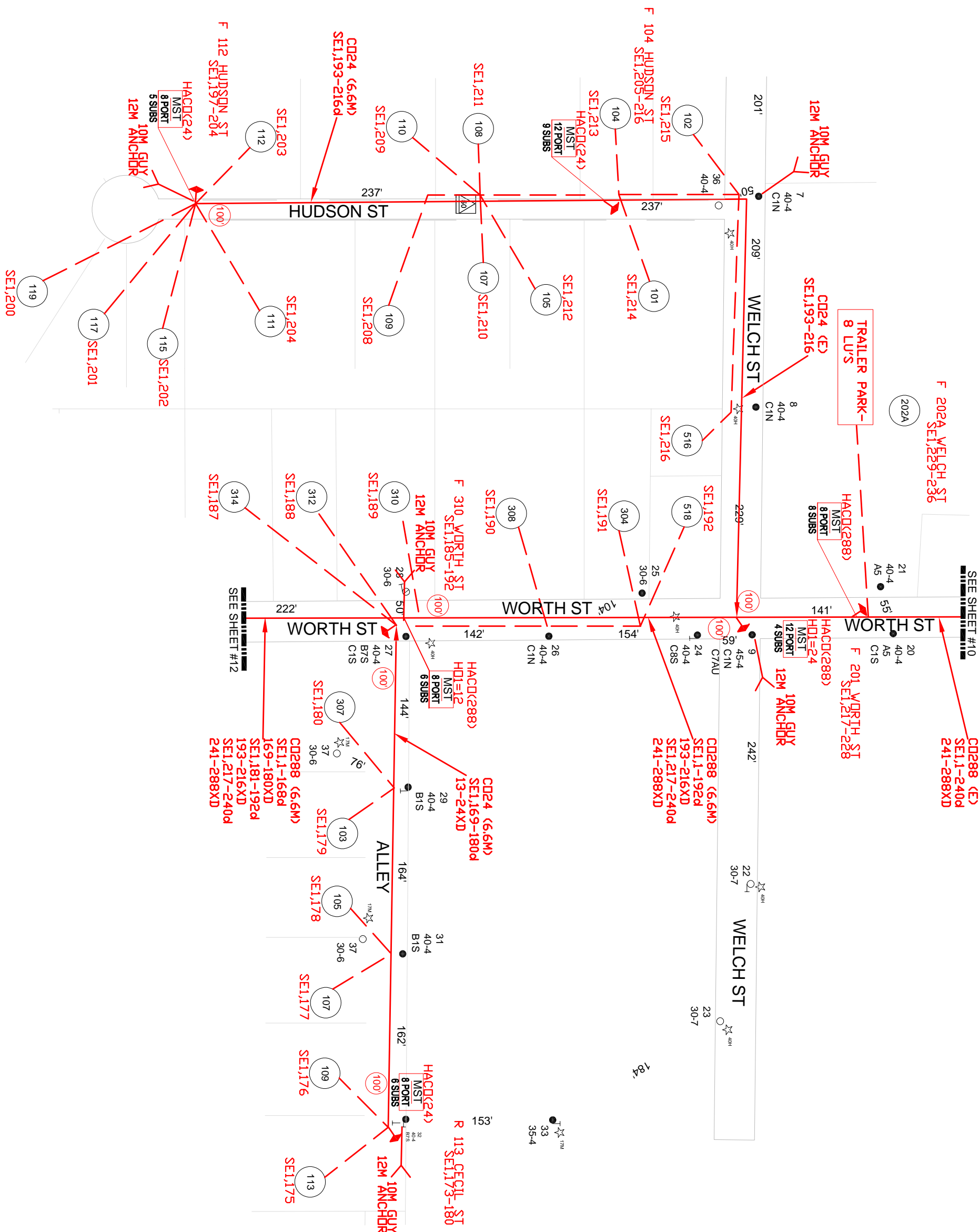
B SIZE DWG: 1" = 100'

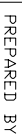
SHEET 11 OF 16

DWG. NO.

Sylvester SE\_1

Know what's **below**.  
Call before you dig





**Associates, LLC**  
1220 OLD ALPHARETTA ROAD

1220 OLD ALPHARETTA ROAD  
ALPHARETTA, GA 30005

AD

JOB No. SYLVGA00003

MATERIAL LIST	QUANTITY	
	ESTIMATED	ACTUAL
CO288(6.6M)	640'	
CO48(6.6M)	1369'	
CO24(6.6M)	573'	
MST 4	1	
MST 12	1	
HACO(24)	1	
HACO(48)	3	
HACO(288)	2	
H01	48	
12W ANCHOR	4	
10M GUY	4	

[illegible]

**CITY OF SYLVESTER**  
**WORTH COUNTY, GEORGIA**

EXCEPT AS MAY BE OTHERWISE PROVIDED BY CONTRACT, THESE DRAWINGS AND SPECIFICATIONS SHALL REMAIN THE PROPERTY OF ENGINEERING ASSOCIATES, LLC., BEING ISSUED IN STRICT CONFIDENCE AND SHALL NOT BE REPRODUCED, COPIED, OR USED FOR ANY PURPOSE WITHOUT SPECIFIC WRITTEN PERMISSION.

[illegible]

SCALE

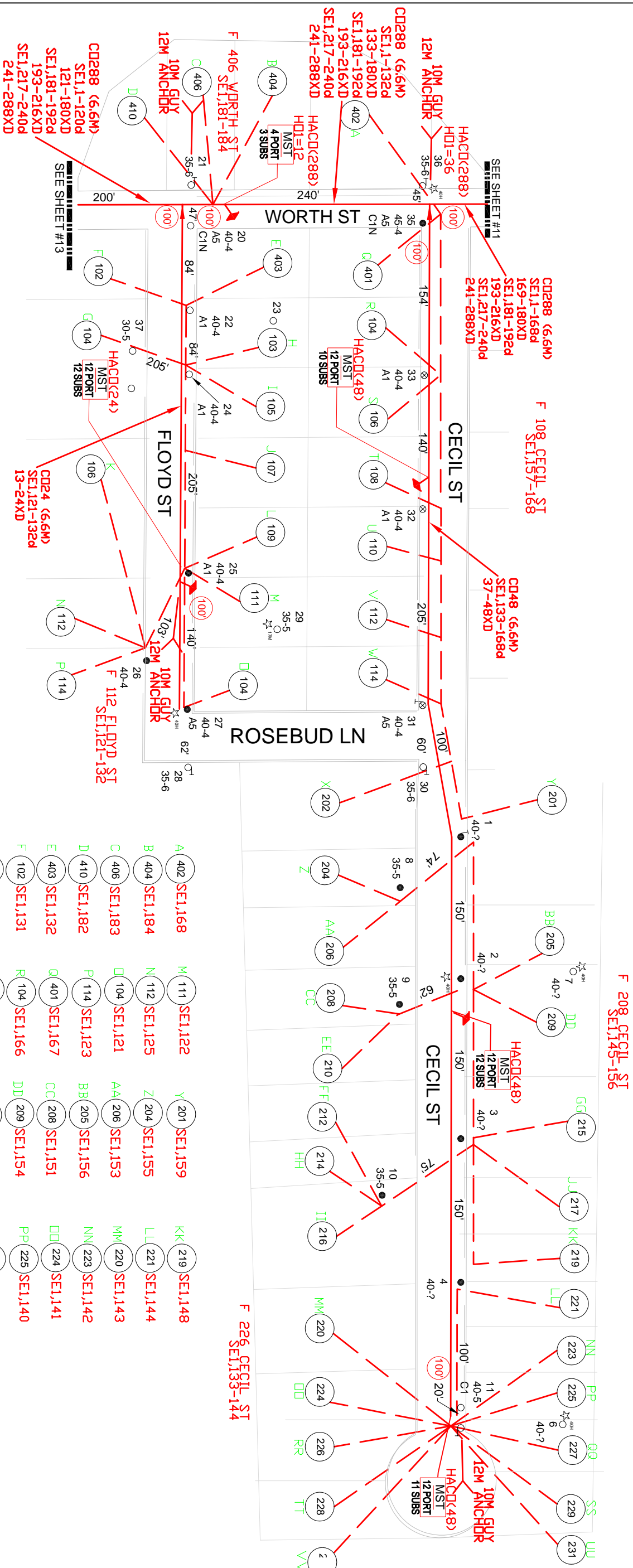
B SIZE DWG: 1" = 100'

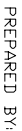
SHEET 12 OF 16

DWG. NO.

Sylvester SE\_1

Know what's **below**.  
**Call before you dig**





ALPHARETTA, GA 30005

JOB No. SYLVGA00003

MATERIAL LIST		QUANTITY
	ESTIMATED	ACTUAL
22388(6.6M)	1088'	
67224(6.6M)	617'	
ST 4	3	
ST 12	1	
ACQ(288)	4	
ACQ(24)	1	
01	12	
2M ANCHOR	4	
2M GUY	4	

**CITY OF SYLVESTER**  
**WORTH COUNTY, GEORGIA**

EXCEPT AS MAY BE OTHERWISE PROVIDED BY CONTRACT, THESE DRAWINGS AND SPECIFICATIONS SHALL REMAIN THE PROPERTY OF ENGINEERING ASSOCIATES, LLC, BEING ISSUED IN STRICT CONFIDENCE AND SHALL NOT BE REPRODUCED, COPIED, OR USED FOR ANY PURPOSE WITHOUT SPECIFIC WRITTEN PERMISSION.

[illegible]

SCALE

B SIZE DWG: 1" = 100'

SHEET 15 OF 16

WG. NO

Sylvester SE\_1

**Know what's below.  
Call before you dig.**



[illegible][illegible][illegible]

PREPARED BY:  
***Engineering***  
**Associates, LLC**  
1220 OLD ALPHARETTA ROAD  
ALPHARETTA, GA 30005

JOB No. SYLVGA0003

MATERIAL LIST	QUANTITY	ESTIMATED	ACTUAL
C02B8(6.6M)	791'		
C07J(6.6M)	189'		
C02d(6.6M)	550'		
MST 4	3		
MST 8	1		
HACQ(24)	2		
HACQ(28)	3		
H01	84		
12M ANCHOR	2		
10M GUY	2		

**CITY OF SYLVESTER**  
**WORTH COUNTY, GEORGIA**

EXCEPT AS MAY BE OTHERWISE PROVIDED BY CONTRACT, THESE DRAWINGS AND SPECIFICATIONS SHALL REMAIN THE PROPERTY OF ENGINEERING ASSOCIATES, L.L.C., BEING ISSUED IN STRICT CONFIDENCE AND NOT TO BE REPRODUCED, COPIED OR USED FOR ANY PURPOSE WITHOUT SPECIFIC WRITTEN PERMISSION.

**REVISIONS**

DATE	DESCRIPTION	INITIAL

**SCALE**

B SIZE DWG: 1"= 100'

SHEET 14 OF 16

DWG. NO.

Sylvester SE\_1

THIS IS A CAD DRAWING. DO NOT REVISE MANUALLY.

[illegible][illegible][illegible]

<div style="text-align: center;"> <b>Engineering Associates, LLC</b>                      1220 OLD ALPHARETTA ROAD                      ALPHARETTA, GA 30005   <b>JOB No. SYLVGA0003</b> </div>					
MATERIAL LIST	QUANTITY	ESTIMATED	ACTUAL		
C0288(6.6M)	791'				
C072(6.6M)	189'				
C024(6.6M)	550'				
MST 4	3				
MST 8	1				
HACQ(24)	2				
HACQ(288)	3				
H01	84				
12M ANCHOR	2				
10M GUY	2				

# CITY OF SYLVESTER

## WORTH COUNTY, GEORGIA

EXCEPT AS MAY BE OTHERWISE PROVIDED BY CONTRACT, THESE DRAWINGS AND SPECIFICATIONS SHALL REMAIN THE PROPERTY OF ENGINEERING ASSOCIATES, L.L.C., BEING ISSUED IN STRICT CONFIDENCE AND ARE NOT TO BE REPRODUCED, COPIED OR USED FOR ANY PURPOSE WITHOUT SPECIFIC WRITTEN PERMISSION.

REVISIONS		
DATE	DESCRIPTION	INITIAL

SCALE

B SIZE DWG: 1" = 100'

SHEET 14 OF 16

DWG. NO. Sylvester SE\_1

THIS IS A CAD DRAWING. DO NOT REVISE MANUALLY.

[illegible][illegible][illegible][illegible][illegible]

PREPARED BY:

**Engineering Associates, LLC**

1220 OLD ALPHARETTA ROAD  
ALPHARETTA, GA 30005

JOB No. SYLVGA0003

# CITY OF SYLVESTER

## WORTH COUNTY, GEORGIA

DATE

DESCRIPTION

INITIAL

EXCEPT AS MAY BE OTHERWISE PROVIDED BY CONTRACT, THESE DRAWINGS AND SPECIFICATIONS SHALL REMAIN THE PROPERTY OF ENGINEERING ASSOCIATES, L.L.C. BEING ISSUED IN STRICT CONFIDENCE AND NOT BE REPRODUCED, COPIED OR USED FOR ANY PURPOSE WITHOUT SPECIFIC WRITTEN PERMISSION.

SCALE

B SIZE DWG: 1" = 100'

SHEET 14 OF 16

DWG. NO.

Sylvester SE\_1

MATERIAL LIST	QUANTITY	ESTIMATED	ACTUAL
CO288(6.6M)	791'		
CO27(6.6M)	189'		
CO24(6.6M)	550'		
MST 4	3		
MST 8	1		
HACO(24)	2		
HACO(288)	3		
H01	84		
12M ANCHOR	2		
10M GUY	2		

PREPARED BY: <b><i>Engineering Associates, LLC</i></b> 1220 OLD ALPHARETTA ROAD ALPHARETTA, GA 30005	JOB No. SYLVGA0003
---	--------------------

MATERIAL LIST	QUANTITY	ESTIMATED	ACTUAL
C028(6.6M)	791'		
C072(6.6M)	189'		
C024(6.6M)	550'		
MST 4	3		
MST 8	1		
HACQ(24)	2		
HACQ(28)	3		
HOT	84		
12M ANCHOR	2		
10M GUY	2		

## CITY OF SYLVESTER

WORTH COUNTY, GEORGIA

EXCEPT AS MAY BE OTHERWISE PROVIDED BY CONTRACT, THESE DRAWINGS AND SPECIFICATIONS SHALL REMAIN THE PROPERTY OF ENGINEERING ASSOCIATES, L.L.C., BEING ISSUED IN STRICT CONFIDENCE AND NOT TO BE REPRODUCED, COPIED OR USED FOR ANY PURPOSE WITHOUT SPECIFIC WRITTEN PERMISSION.

**REVISIONS**

DATE	DESCRIPTION	INITIAL

SCALE                  B SIZE DWG:      1" = 100'

SHEET 14 OF 16

DWG. NO.               Sylvester SE\_1

THIS IS A CAD DRAWING. DO NOT REVISE MANUALLY.







PREPARED BY:  
**Engineering Associates, LLC**  
1220 OLD ALPHARETTA ROAD  
ALPHARETTA, GA 30005

JOB No. SYLVGA0003

MATERIAL LIST	QUANTITY	
	ESTIMATED	ACTUAL
864 FOC	testing	
432 FOC		
72 FOC		
HDPE		
2.5 x5 x2.5'		
710		
U-GUARD		
12M ANCHOR		
10M GUY		
6.6M STRAND		

CITY OF SYLVESTER  
WORTH COUNTY, GEORGIA

EXCEPT AS MAY BE OTHERWISE PROVIDED BY CONTRACT, THESE DRAWINGS AND SPECIFICATIONS SHALL REMAIN THE PROPERTY OF ENGINEERING ASSOCIATES, LLC. BEING ISSUED IN STRICT CONFIDENCE AND NOT TO BE REPRODUCED, COPIED, OR USED FOR ANY PURPOSE WITHOUT SPECIFIC WRITTEN PERMISSION.

REVISIONS

DATE	DESCRIPTION	INITIAL



Know what's below.  
Call before you dig.

SCALE		
B SIZE DWG:	1" = 100'	
SHEET	16	OF 16
DWG. NO.	Sylvester SE_1	
THIS IS A CADD DRAWING, DO NOT REVISE MANUALLY.		

